

Store More® Clipboard Stand Assembly Instructions

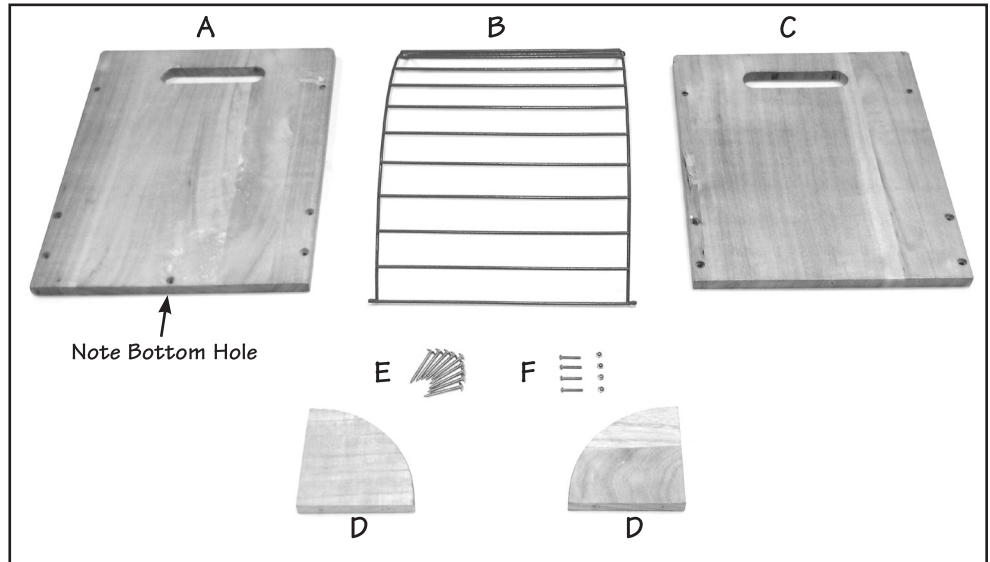
Congratulations on your purchase of this **Store More® Clipboard Stand**.

Before you begin, please refer to the Parts List to ensure that all materials needed for assembly have been received. You will need a Phillips Screwdriver for assembly.

This Really Good Stuff® product includes:

- A – 1 Bottom
- B – 1 Metal holder
- C – 1 Back
- D – 2 Corner supports
- E – 9 Large screws
- F – 4 Small bolts and nuts

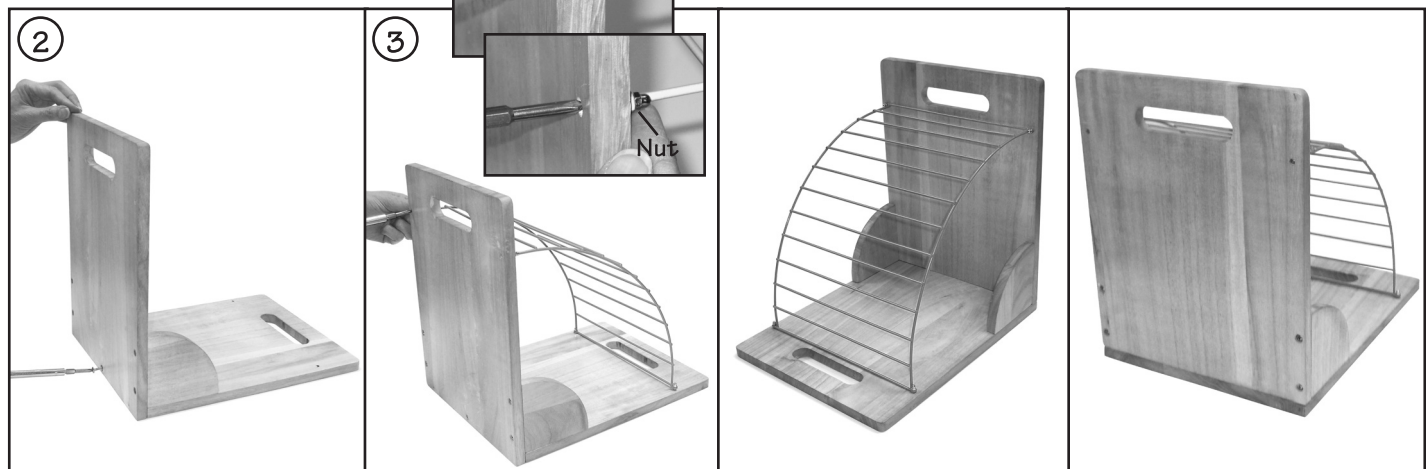
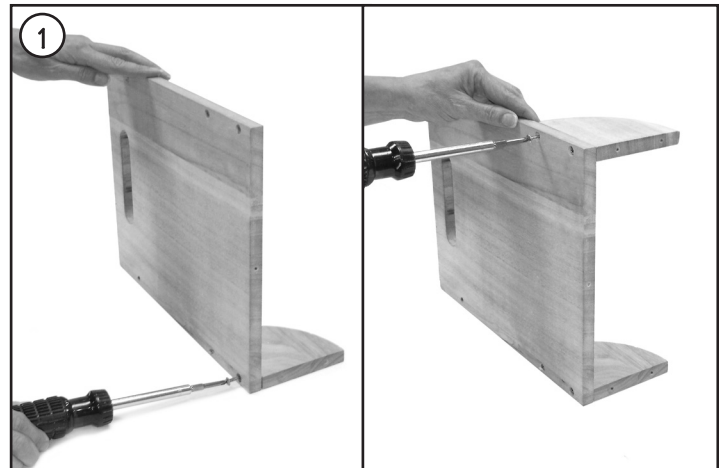
You may also have received spare parts.



To assemble this Store More® Clipboard Stand:

Note: Recessed holes indicate outer side of Bottom and Back.

1. Attach the two corner supports **D** to back **C** using two screws **E** each. Make sure the indented holes are facing out when screwing wood panels together.
2. Attach the bottom **A** to the back **C** by putting a screw **E** in the center hole. Secure the bottom to the back with the remaining four screws.
3. Attach metal holder **B** to unit with the 4 small bolts and nuts **F**, forming an arc. Bolts should be inserted from the indented hole side, while nuts are screwed from the wire divider side.



All instructional guides can be found online.